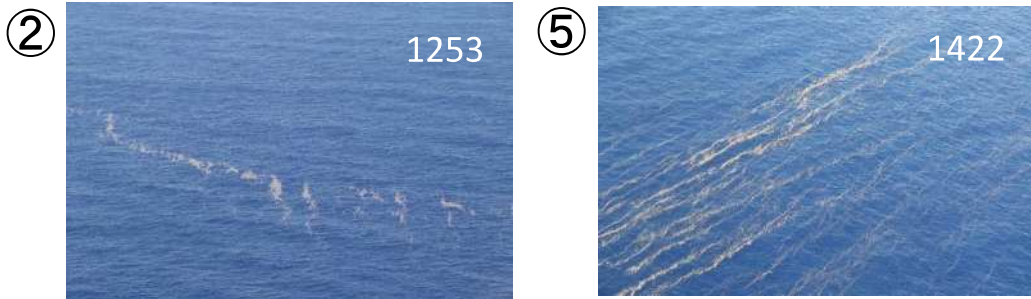


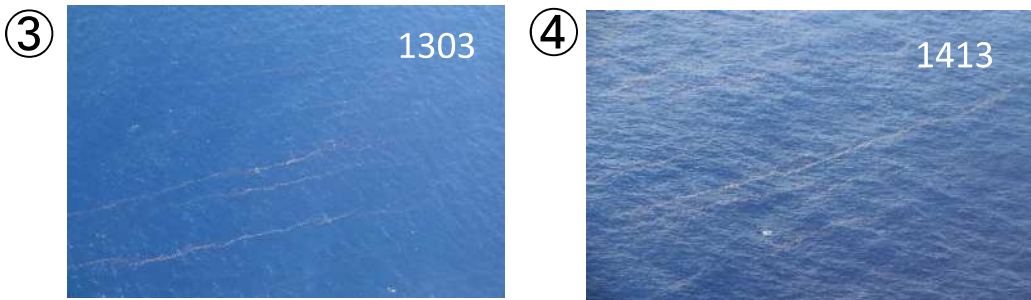
31-23.10N 134-00.00E

31-21.05N 134-10.27E



30-23.63N 133-59.92E

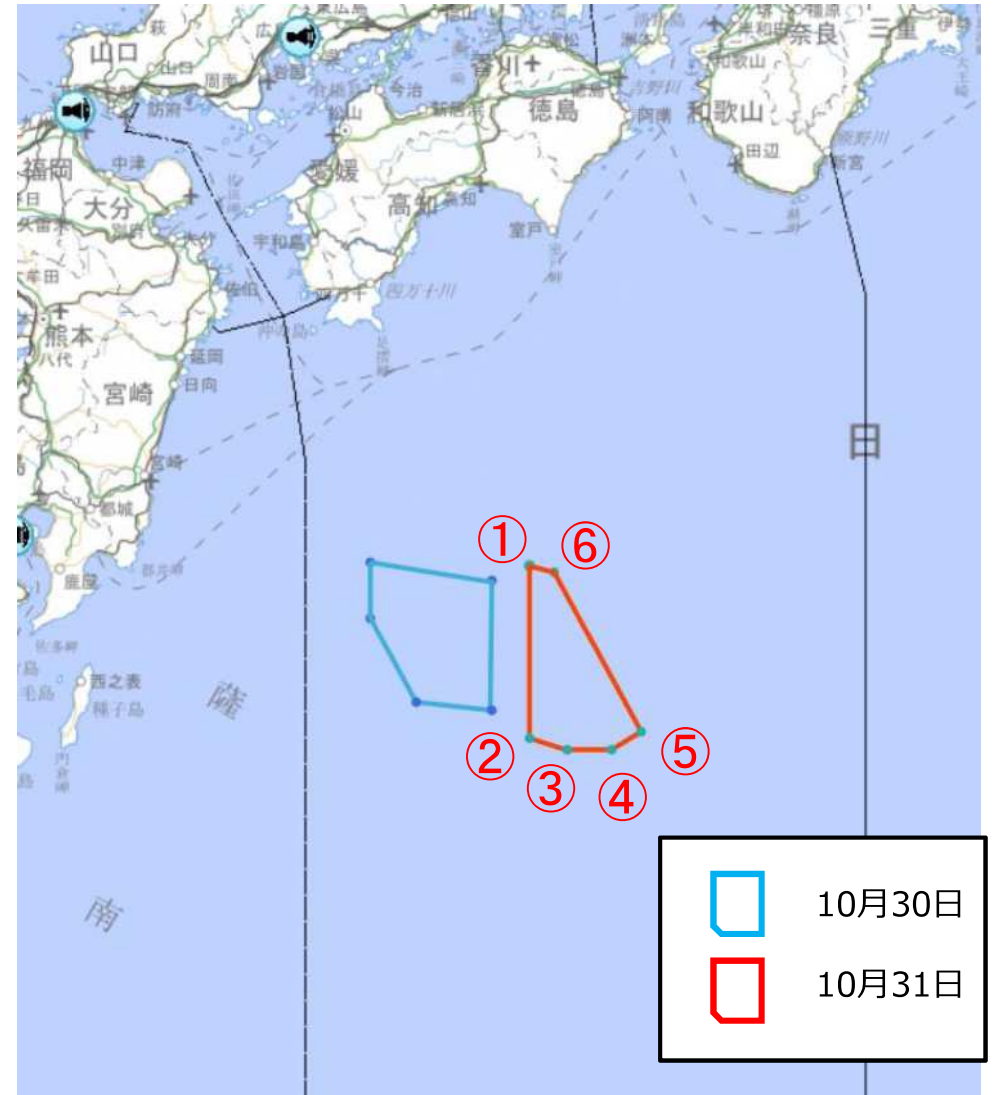
30-26.25N 134-44.97E



30-20.00N 134-15.00E

30-19.87N 134-33.40E

当庁航空機が確認した軽石の漂流状況(イメージ図)





31-24.43N 132-56.51E



31-24.43N 133-03.83E



31-04.88N 132-56.36E



30-36.14N 133-14.55E



30-51.98N 133-18.05E



30-42.09N 133-30.01E

④ 30-33.46N 133-44.70E

⑤ 31-17.87N 133-45.00E

当庁航空機が確認した軽石の漂流状況(イメージ図)

